

Naar een Circulair Nederland

Uitvoeringskracht op de investeringsagenda van provincies, gemeenten en waterschappen voor de transitie naar een circulaire economie



Content

- Introduction IPO
- Circular economy and Dutch provinces
- Questions

Introduction IPO

By and for provinces

Umbrella association of the twelve provinces: general assembly, board, board of provincial secretaries, director

For each provincial task: BAC, AAC, workgroup

Also: challenge-oriented organisation

IPO-desk



Playing field

Provinces

UvW, VNG

NGO's

Dutch government and Brussels

Tasks and goals

- IPO is the advocate by and for provinces in The Hague and Brussels
- Platform for innovation, knowledge development and - exchange
- Agenda setting

Toward a circular economy in the region

- Circular economy part of core task regional economy
- High on the agenda
- Even more after today (elections)

2017 IPO signed National Agreement Raw Materials

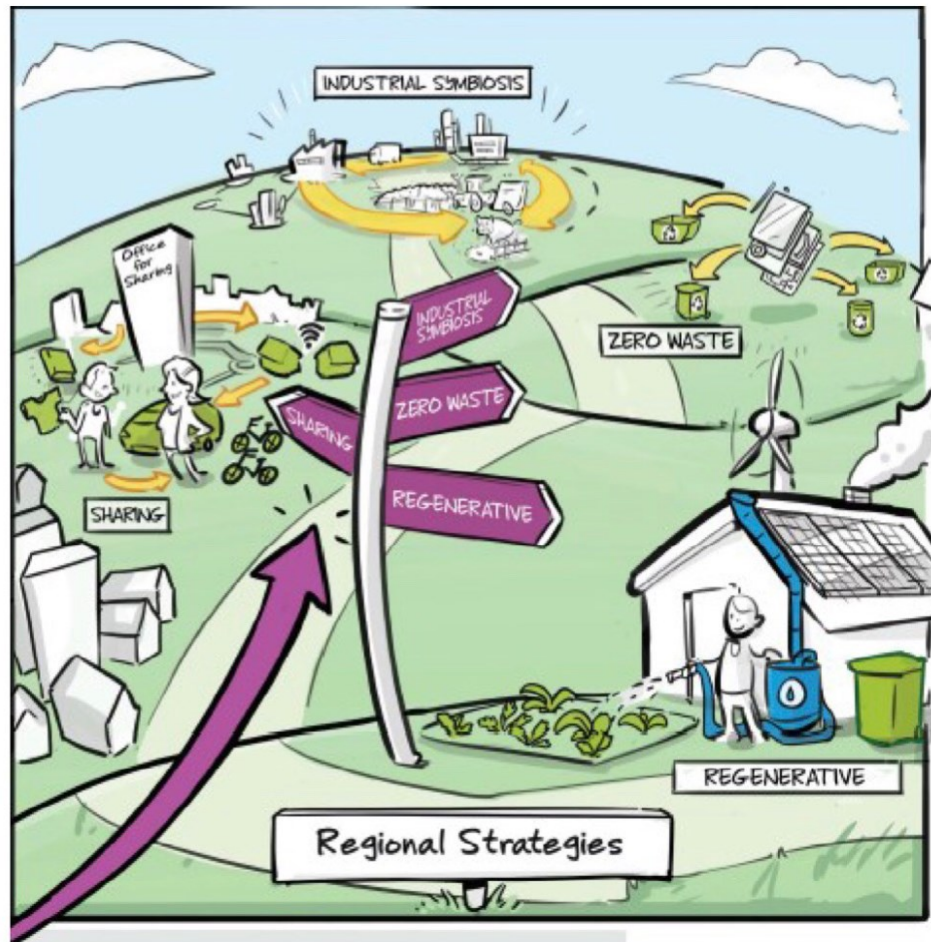


Spring 2017: investment agenda on
a sustainable Netherlands

Offer to new national government on
energy, climate and circular
economy

Joint challenge: regional circular
coalitions

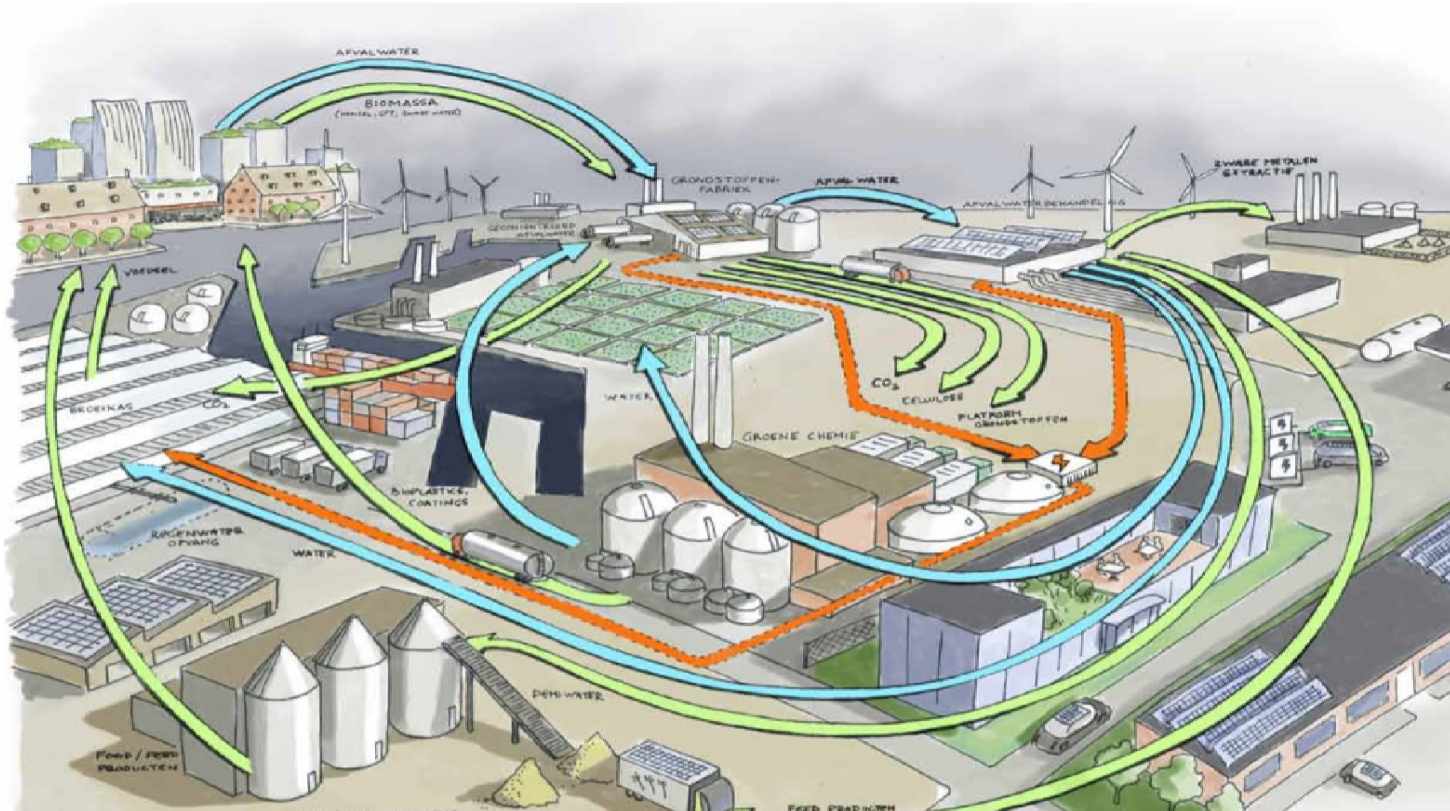
-
- Regional, local and water authorities complementary tasks and responsibilities
 - Together a decisive force
 - New way of working as network



Focus on economic value

- Different roadmaps, same goal
- Step 1: vision
- Step 2: material flow analysis: insight in raw materials/residual materials on regional level and matchmaking: opportunity maps

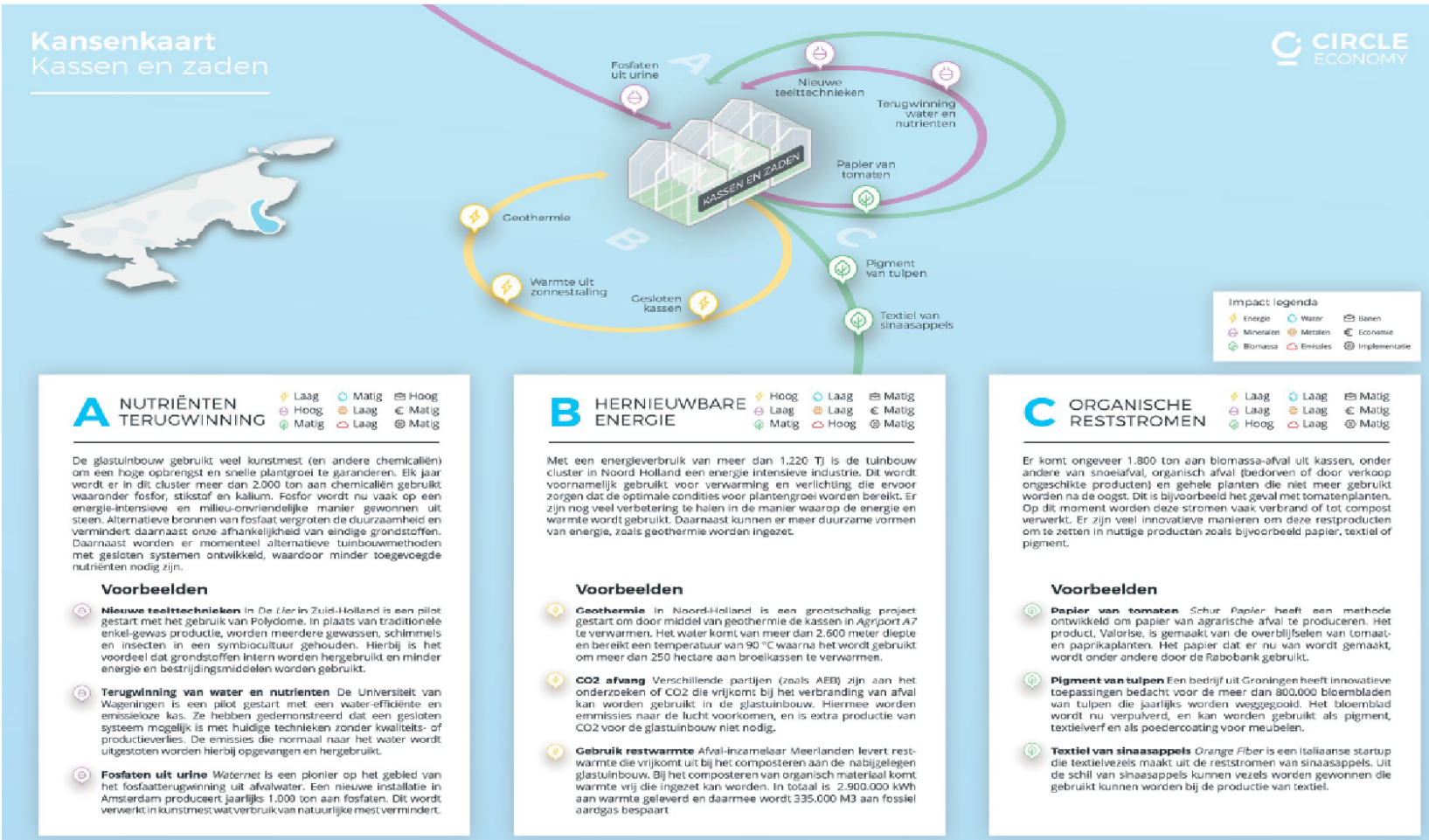
Step 2 material flow analysis



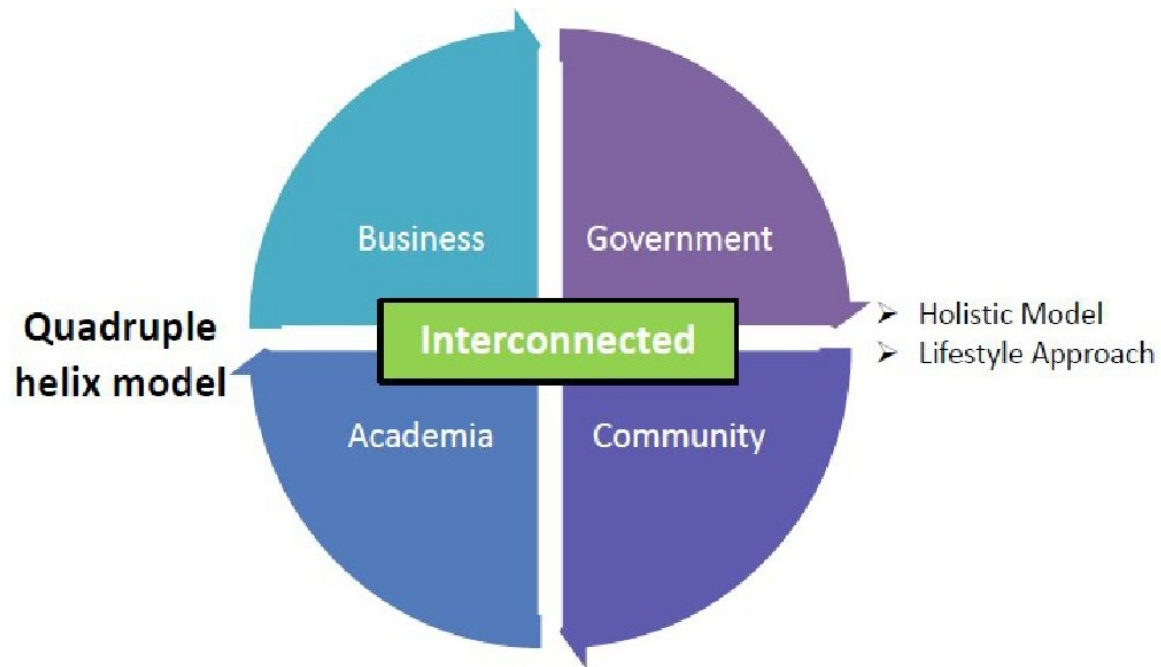
and matchmaking businessclusters



Opportunity map Noord-Holland



Step 3 Coalitions



-
- PPP, triple helix
 - Examples: circular Fryslân

Step 4 Implementation

- Programmatic approach: connection between initiatives and targets
- Shared ambitions

Instruments provinces

- Tool kit: innovations subsidies (proof of concept), funding, new businessmodels (small and medium sized business),
- Invest.NL
- Human Capital Agenda

IPO: coalitions of the willing



Questions?



Eveline de Graaff

+31 6 28901216

edgraaff@ipo.nl



@IPO_Provincies